

Parker Gen II R-Max™ Stream Switching System Low Pressure Actuator Assembly

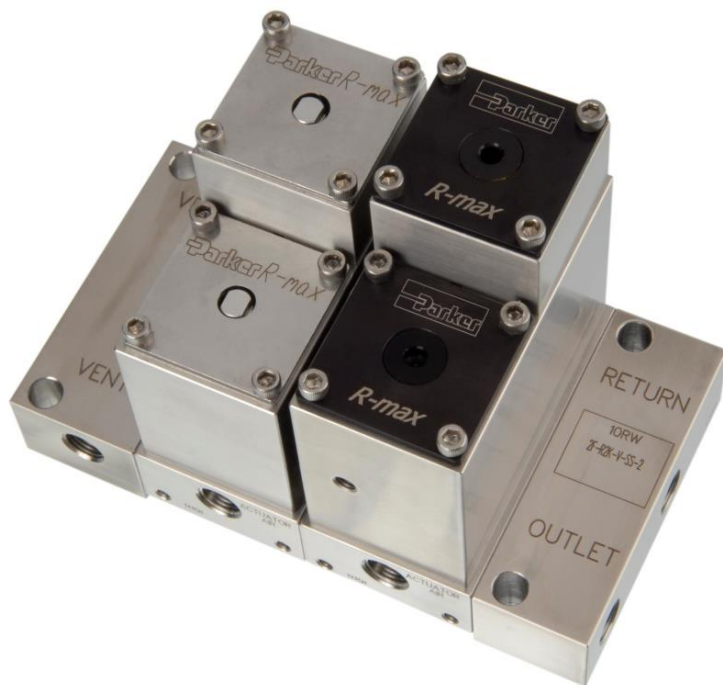
For analytical applications requiring low actuation air pressure



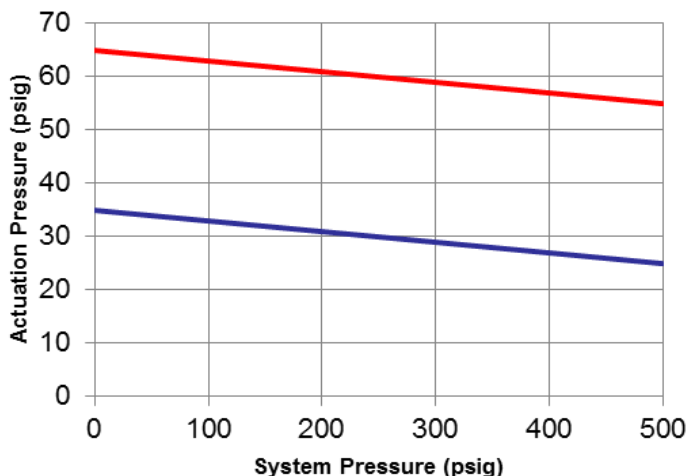
The Parker Gen II R-Max™ Stream Switching System Double Piston design can control both gases and liquids in analytical systems ranging from vacuum to 500 (psig) while requiring only 35 psig actuating air pressure.

The double piston design also incorporates the new Gen II R-Max features including the captured vent, enhanced visual indicator and backward compatibility.

- 35 psig actuation air pressure
- Compatible with R-Max™ and Gen II R-Max™ units
- Kits available for retrofit onto existing units
- Wide variety of elastomeric seals available
- 316 stainless steel construction
- 100% factory tested



**Gen II R-Max
Actuation Pressure -vs- System Pressure**



- STD Gen II R-Max
- Double Piston Gen II R-Max

How To Order Kit:

KIT-R2LP- * -SS
KIT-R3LP- * -SS

R2: Original R-Max

R3: Gen II R-Max

* : Elastomer of choice

How To Order Assembly:

Add "LP" to the end of a part number. For example:

2F-R3K-V-SS-2-FF-LP



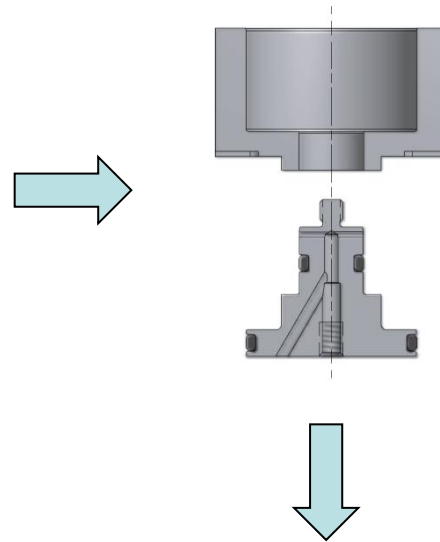
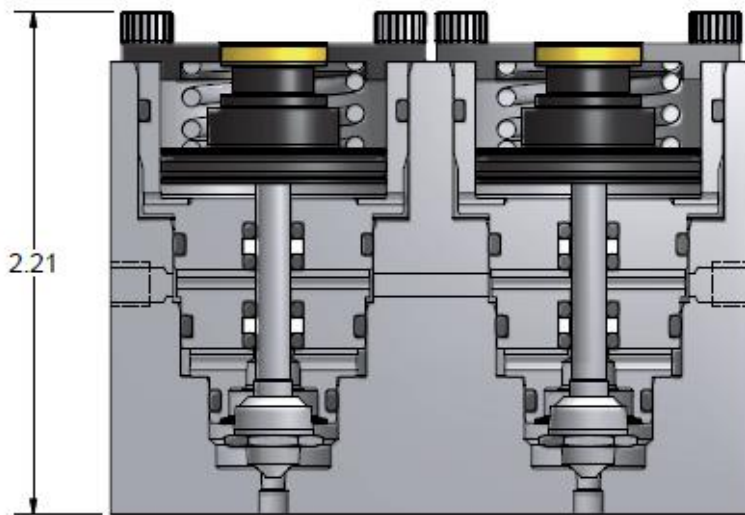
ENGINEERING YOUR SUCCESS.

Parker Gen II R-Max™ Stream Switching System Low Pressure Actuation Assembly

Retrofitting the Double Piston is quick and easy.

Starting with an R-Max™ or Gen II R-Max™

Using the required components, the assembly can be converted to the double piston design.



Following the Parker Double Piston Maintenance Instructions (provided with each Kit); the low pressure actuator assembly may be completed.

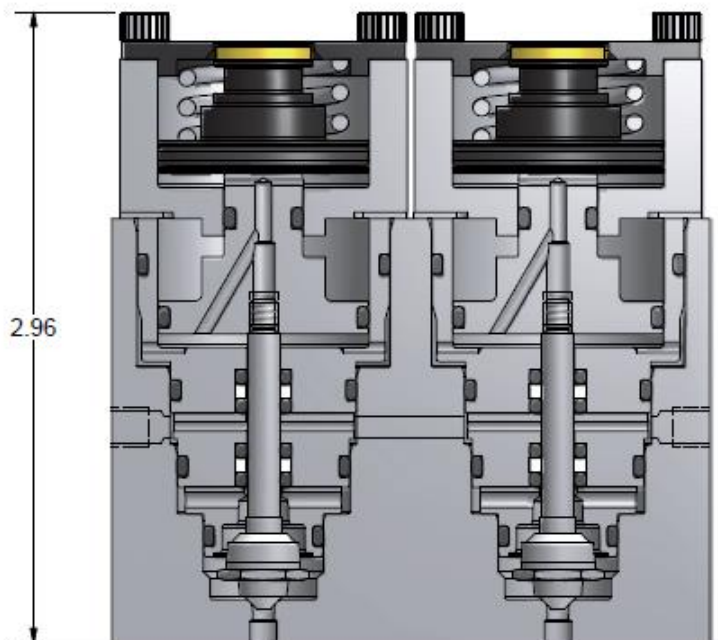
Note: Backwards compatibility allows for installation on previously installed R-Max modules.

Contact Information:

Parker Hannifin Corporation
Instrumentation Products Division
1005 A Cleaner Way
Huntsville, AL 35805

phone 256.881.2040
fax 256.881.5730
ipdsales@parker.com

www.parker.com/ipdus



ENGINEERING YOUR SUCCESS.