

MPU SERIES CONNECTOR

Specifications ● ● ●

PRESSURE:

Vacuum to 35 psi, 2.4 bar

TEMPERATURE:

-40°F to 300°F (-40°C to 149°C)

MATERIALS:

Main components:

Polysulfone (amber tint), USP Class VI, ADCF

O-rings: Silicone (clear), platinum-cured, USP Class VI, ADCF

STERILIZATION:

Gamma: Up to 50 kGy irradiation

Autoclave: Up to 270°F (132°C) for 60 minutes, up to 25 repetitions. Sterilize uncoupled only.

TUBING SIZES: 3/4" ID (19.0 mm)

WARNING: Pressure, temperature, chemicals, and operating environment can affect the performance of couplings. It is the customer's responsibility to test the suitability of CPC's products in their own application conditions.

The MPU's twist-to-connect design features an easy-to-use locking mechanism that guards against accidental disconnects and provides a reliable, secure connection. A 3/4" hose barb provides smooth, rapid media transfer.

FEATURES

3/4" hose barb

Locking feature

Sharp barb end

Shrouded, leak-free seal & smooth, internal flow path

ADCF-free materials

BENEFITS

Facilitates rapid fill and empty of bioprocessing bags

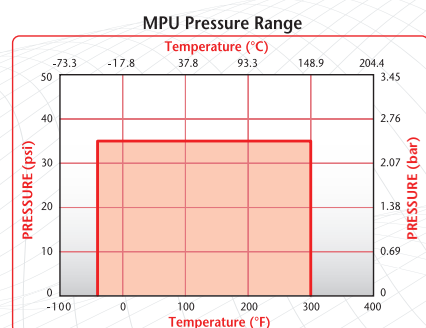
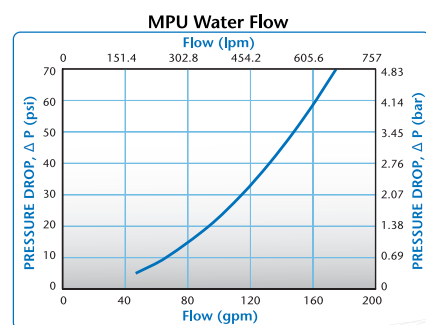
Guards against accidental disconnects

Minimizes fluid turbulence and dead space

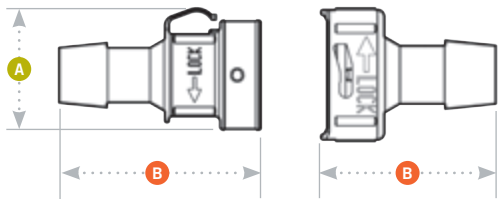
Protect valuable fluids and eliminate potential to contaminate fluid path

Meet BSE/TSE requirements

These graphs are intended to give you a general idea of the performance capabilities of each product line. The shaded area of each graph represents the operating range of the product family, i.e., upper and lower values are shown. Therefore, depending on the exact coupling configurations selected, you can reasonably expect values to fall within the shaded area.



MPU SERIES CONNECTOR DIMENSIONS




A = Height/Diameter
B = Total Length


Coupling Bodies • POLYSULFONE

	TERMINATION IN-LINE HOSE BARB	TUBING 3/4" ID	METRIC EQ. 19.0mm ID	FLOW .71"	STRAIGHT THRU MPU171239	A 1.75 (44.5)	B 2.37 (60.2)

Coupling Inserts • POLYSULFONE

	TERMINATION IN-LINE HOSE BARB	TUBING 3/4" ID	METRIC EQ. 19.0mm ID	FLOW .71"	STRAIGHT THRU MPU221239M	O-RING Silicone Seal USP Class VI	A 1.56 (39.6)	B 2.88 (73.2)

Accessories • POLYSULFONE

	SEALING CAP MPU32039		MATERIAL Polysulfone USP Class VI	A 1.75 (44.5)	B .79 (20.1)
	SEALING PLUG MPU30039M	O-RING Silicone Seal	MATERIAL Polysulfone USP Class VI	A 1.56 (39.6)	B 1.38 (35.1)

All measurements are in inches (millimeters) unless otherwise noted. Tubing must meet stated inside and outside diameters.