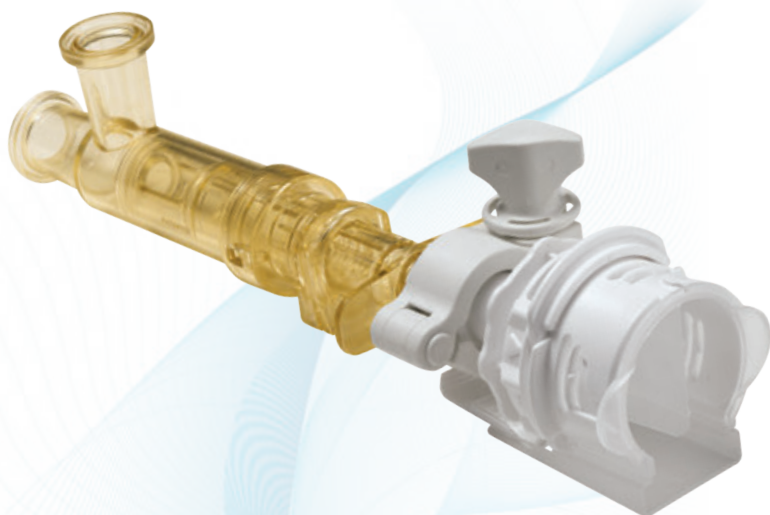


# ASEPTIQUIK® STC SERIES CONNECTOR



**AseptiQuik® STC Connectors** integrate the AseptiQuik® sterile connector and the Steam-Thru® II SIP connector, giving manufacturers even greater flexibility for hybrid stainless steel and single-use processing. The AseptiQuik STC connector combines either an AseptiQuik G or AseptiQuik C sterile connector with a Steam-Thru II connection that can be mounted directly to a stainless steel vessel via a sanitary termination. AseptiQuik STC connectors utilizing an AseptiQuik G sterile connector offer a genderless design, simplifying system integration at the aseptic connector end. AseptiQuik STC connectors utilizing an AseptiQuik C sterile connector allow system designers to incorporate a keyed female-to-male connection at the aseptic connector end.

The union of the two connectors into a single unit through a sanitary clamp allows an AseptiQuik sterile connection to be steamed on to stainless equipment via SIP. After the SIP cycle, a wide range of single-use systems can be connected. The SIP process can be done in advance allowing a quick and easy sterile connection to the AseptiQuik half without having to wait 30-60 minutes for SIP prior to harvest.

## FEATURES

## BENEFITS

AseptiQuik design	Innovative three-step connection process reduces risk of operator error
Genderless design	Eases integration of single-use systems with universal mating between AseptiQuik G Connectors
Innovative three-port steam design	Allows a true steam-through SIP process which eliminates "dead legs"
Robust construction	Repeatable and reliable performance with no additional hardware required
Patented steam valve design	Allows sterile connection and disconnection to stainless equipment and permits a high media flow rate.
Sanitary interface between the two connectors	More secure connection than tubing with cable ties
CPC Click	Audible confirmation of assembly steps
Market availability	Open access through multiple supply chain partners

## Specifications ● ● ●

### PRESSURE:

**Steam position:** Up to 35 psi, 2.4 bar

**Flow position:** Up to 20 psi, 1.4 bar

### TEMPERATURE:

**Steam position:**

Up to 275°F (135°C) for 60 minutes

**Flow position:** 39°F to 104°F (4°C to 40°C)

### STERILIZATION:

**Gamma:** Up to 50kGy irradiation

**AutoClave:** High Temp (HT) version:

Up to 266°F (130°C) for 30 minutes (AQSTC)

Up to 266°F (130°C) for 60 minutes (AQGSTC)

**Note:** A slight clockwise rotation of the clamp nut may be needed after autoclave.

### MATERIALS:

**Main Components:**

**AseptiQuik** - Polycarbonate (white),  
USP Class VI, ADCF

**Steam-Thru II** - Polysulfone (amber tint), USP  
Class VI, ADCF

**Seals:** Silicone (clear), platinum-cured,  
USP Class VI, ADCF

**Pull Tabs:**

Polycarbonate (blue, standard version),  
USP Class VI, ADCF

Polycarbonate (white, HT version),  
USP Class VI, ADCF

**Caps:** Polypropylene (clear), USP Class VI, ADCF

**Membrane:**

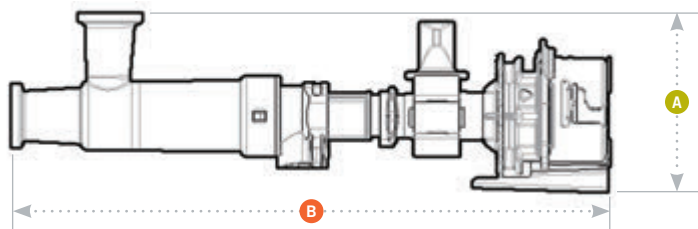
Polyethylene (standard version), USP Class VI,  
ADCF

Hydrophobic polyethersulfone (HT versions), USP  
Class VI, ADCF, PTFE strip sticker

**Clamp:** Nylon 66 (white),  
USP Class VI

*Note: Mates with  
gendered and  
genderless AseptiQuik  
connectors.*

# ASEPTIQUIK® STC SERIES DIMENSIONS



- A** = Height/Diameter
- B** = Total Length
- C** = Actuated Length

Mates with  
gendered  
male and female  
AseptiQuik  
Series.

## Coupling Bodies

### • POLYCARBONATE with Blue Pull Tabs

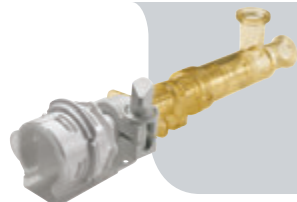


**TERMINATION**  
3/4" X 3/4" SANITARY STEAM-THRU II  
WITH ASEPTIQUIK BODY

3/4" X 1-1/2" SANITARY STEAM-THRU II  
WITH ASEPTIQUIK BODY (PICTURED)

PART NO.	A	B	C
AQSTC2330900	2.78 (70.6 mm)	9.25 (235 mm)	8.42 (213.9 mm)
AQSTC2331000	2.78 (70.6 mm)	9.25 (235 mm)	8.42 (213.9 mm)

### • POLYCARBONATE HT with White Pull Tabs

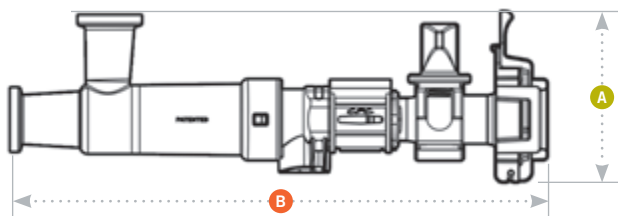


**TERMINATION**  
3/4" X 3/4" SANITARY STEAM-THRU II  
WITH ASEPTIQUIK BODY (PICTURED)

3/4" X 1-1/2" SANITARY STEAM-THRU II  
WITH ASEPTIQUIK BODY

PART NO.	A	B	C
AQSTC2330900HT	2.78 (70.6 mm)	9.25 (235 mm)	8.42 (213.9 mm)
AQSTC2331000HT	2.78 (70.6 mm)	9.25 (235 mm)	8.42 (213.9 mm)

# ASEPTIQUIK® G STC SERIES DIMENSIONS



- A** = Height/Diameter
- B** = Total Length
- C** = Actuated Length

Mates with  
genderless  
AseptiQuik G  
Series.

## Coupling Bodies

### • POLYCARBONATE with Blue Pull Tabs

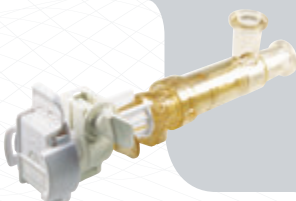


**TERMINATION**  
3/4" X 3/4" SANITARY STEAM-THRU II  
WITH GENDERLESS ASEPTIQUIK G BODY

3/4" X 1-1/2" SANITARY STEAM-THRU II  
WITH GENDERLESS ASEPTIQUIK G BODY

PART NO.	A	B	C
AQGSTC2330900	3.05	8.26	7.36
AQGSTC2331000	3.05	8.26	7.36

### • POLYCARBONATE HT with White Pull Tabs



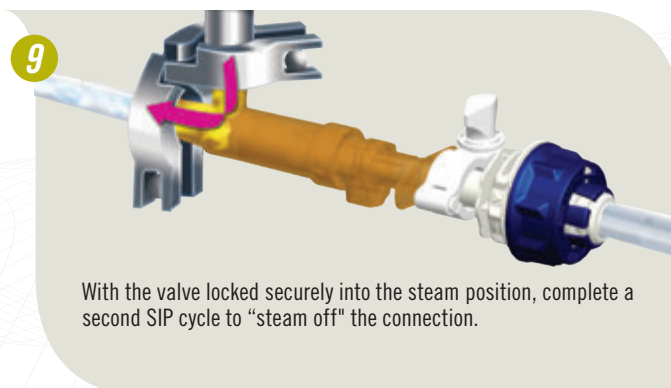
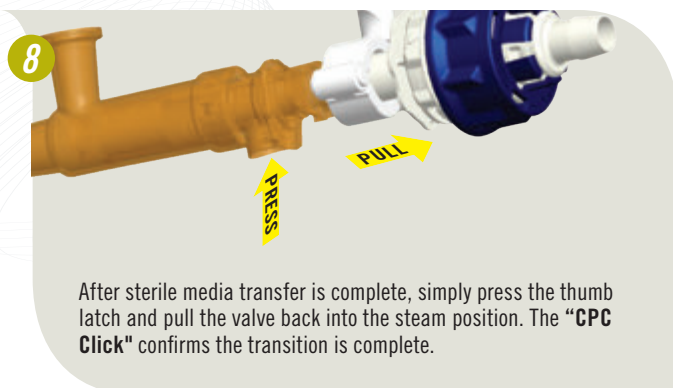
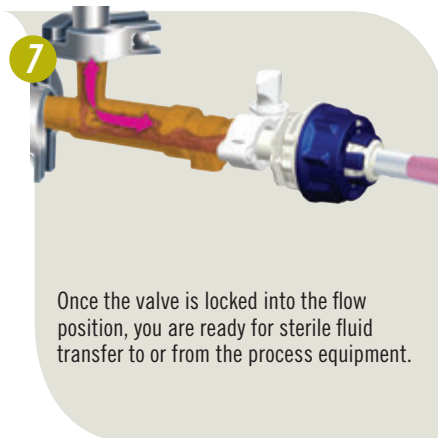
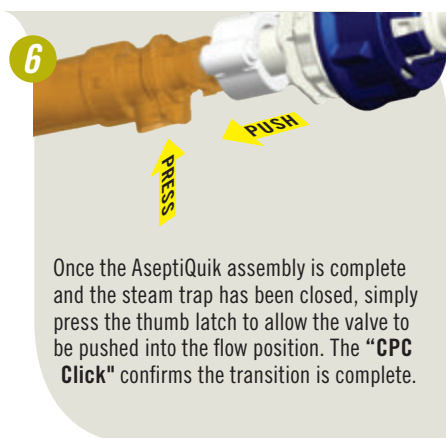
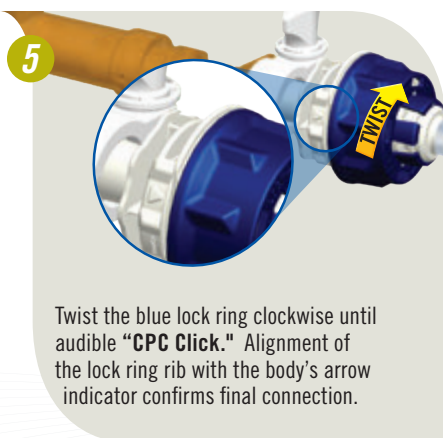
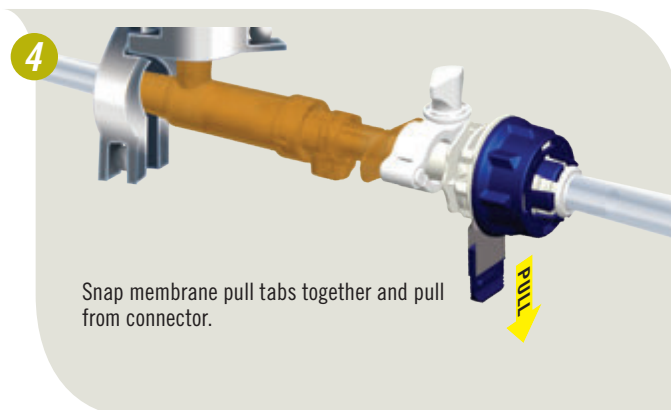
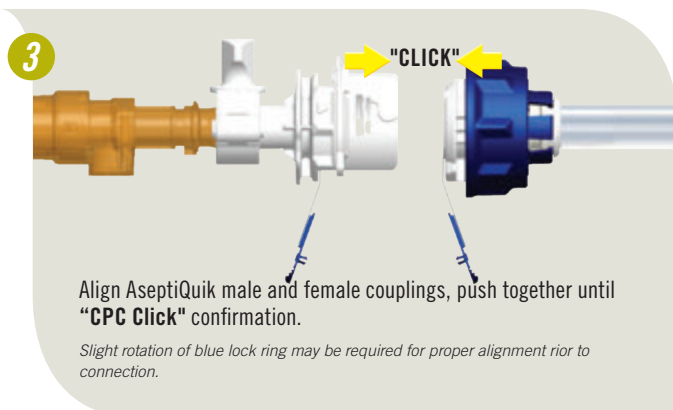
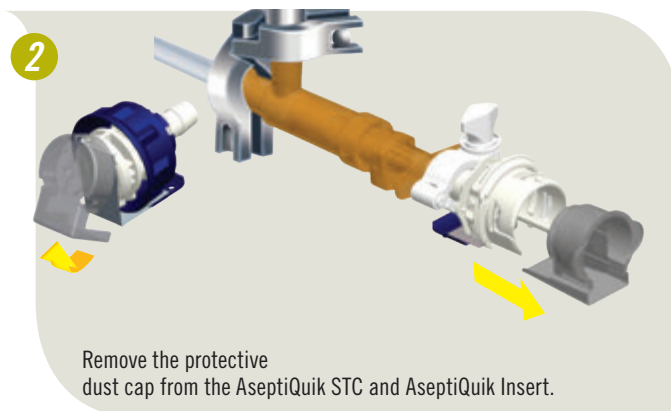
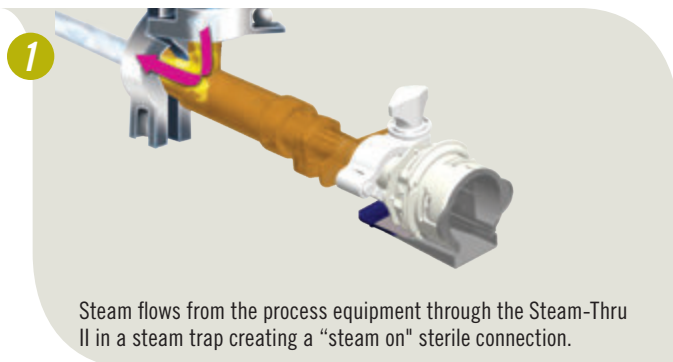
**TERMINATION**  
3/4" X 3/4" SANITARY STEAM-THRU II  
WITH GENDERLESS ASEPTIQUIK G BODY

3/4" X 1-1/2" SANITARY STEAM-THRU II  
WITH GENDERLESS ASEPTIQUIK G BODY

PART NO.	A	B	C
AQGSTC2330900HT	3.05	8.26	7.36
AQGSTC2331000HT	3.05	8.26	7.36

# ASEPTIQUICK® STC SERIES ASSEMBLY PROCEDURE

## CLICK-PULL-TWIST Assembly Procedure





# ASEPTIQUICK® G STC SERIES ASSEMBLY PROCEDURE

## FLIP-CLICK-PULL Assembly Procedure

1

Steam flows from the process equipment through the Steam-Thru II in a steam trap creating a "steam on" sterile connection.

2

Unsnap and flip down the protective pull tab covers on each genderless AseptiQuick G connector half.

FLIP

3

"CLICK"

"CLICK"

Align genderless AseptiQuick G couplings, push together until "CPC Click" confirmation.

4

PUSH

Pull the snapped-together membrane pull tabs from the connector. Remove the Steam-Thru II lock sleeve.

PULL

5

PRESS

PUSH

Once the genderless AseptiQuick G assembly is complete and the steam trap has been closed, simply press the thumb latch to allow the valve to be pushed into the flow position. The "CPC Click" confirms the transition is complete.

6

Once the valve is locked into the flow position, you are ready for sterile fluid transfer to or from the process equipment.

7

PRESS

PULL

After sterile media transfer is complete, simply press the thumb latch and pull the valve back into the steam position. The "CPC Click" confirms the transition is complete.

8

With the valve locked securely into the steam position, complete a second SIP cycle to "steam off" the connection.